
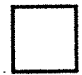

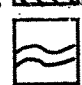


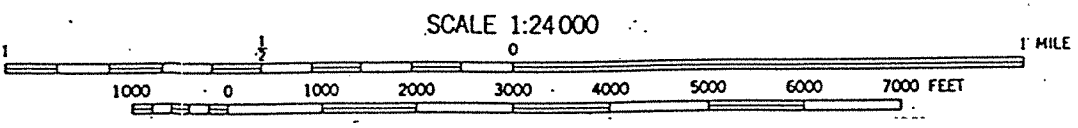
TOWN OF JACKMAN

SHORELAND ZONING MAP

EFFECTIVE DATE: June 29, 2009
 TOWN CLERK: Dana St. Hilaire

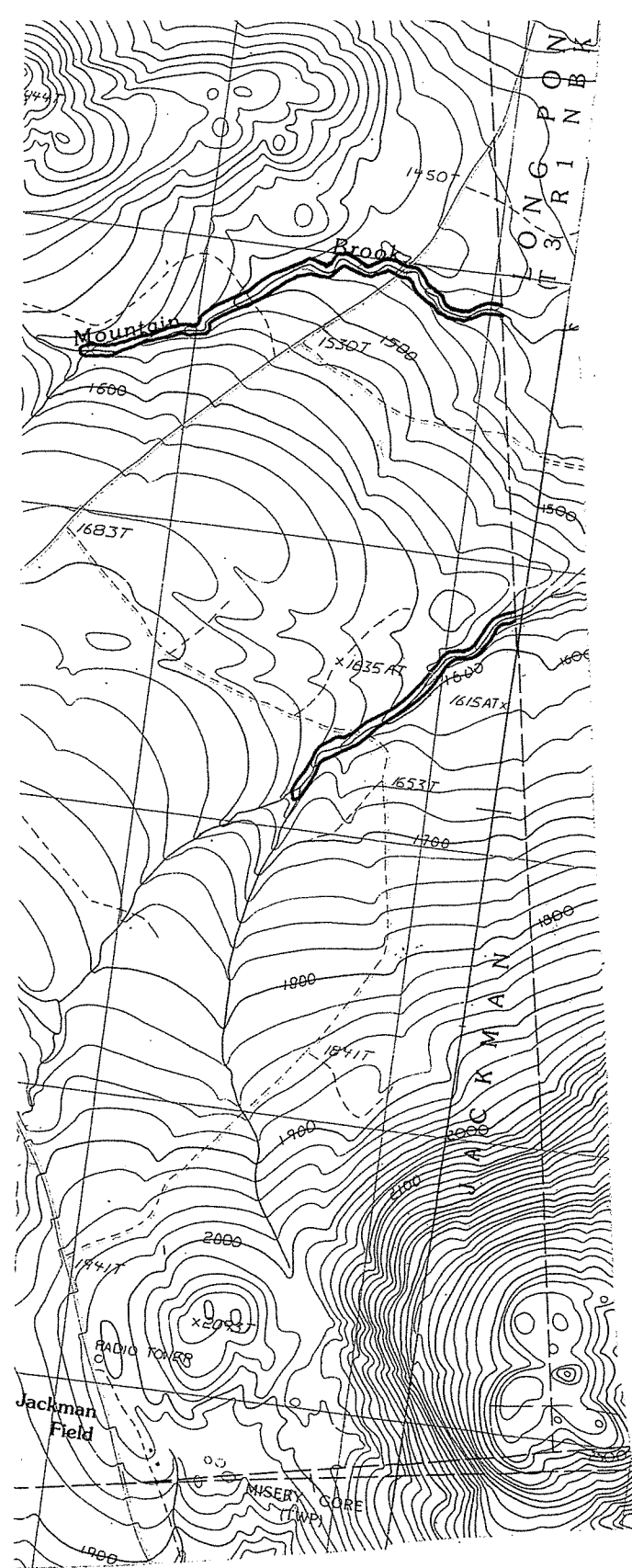
KEY

- RESOURCE PROTECTION DISTRICT..... 
- LIMITED RESIDENTIAL DISTRICT..... 
- LIMITED COMMERCIAL DISTRICT..... 
- STREAM PROTECTION DISTRICT..... 



NOTES

1. Mapped Wetlands: This map shows non-forested areas, 10 acres or greater identified using the National Wetland Inventory Maps, as prepared by the U.S. Department of the Interior. Field verification of the location of the actual wetland boundaries should be undertaken prior to development.
2. Wetland areas contiguous with, and at the same elevation as the normal high water line of great ponds, rivers, and streams are considered part of those waterbodies.



Drafted by Susan S. Tolman, Readfield, Maine

